

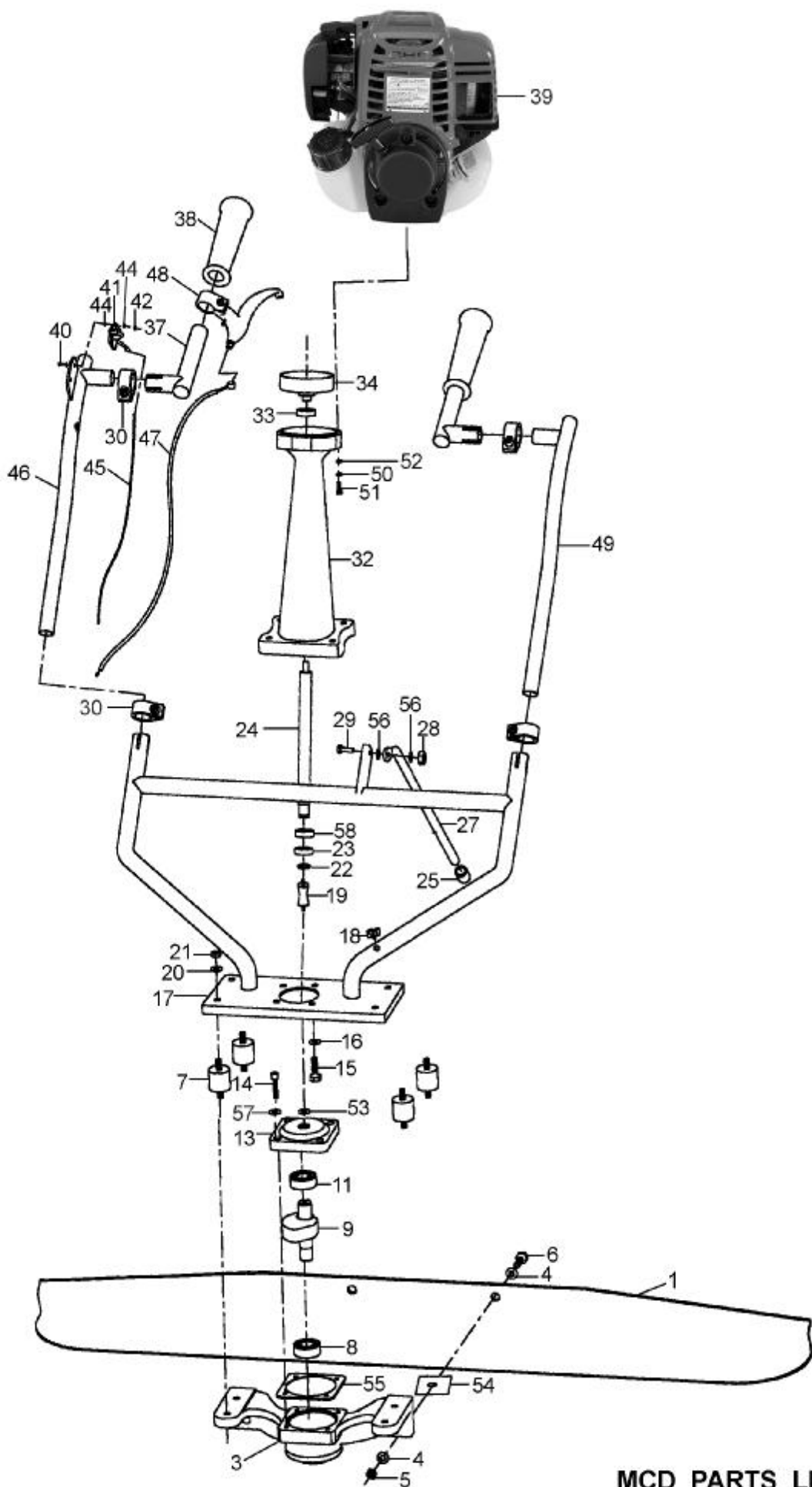


MASALTA®



PARTS MANUAL SURFACE FINISHING SCREED MCD





MCD PARTS LIST

MCD PARTS LIST

ITEM NO.	NEW PARTS NO.	OLD PART NO.	DESCRIPTION	QTY
1	MG12-0012	M128100001	SCREED BLADE	1
3	MG12-0102	M128100002-1	VIBRATION BRACKET	1
4	GB97-12	97.1-12	WASHER 12	4
5	GB889-M12X1.25	T41-1986-M12	SCREW M12	2
6	GB5785-M12X1.25X55	T5782-2000-M12X55	BOLT M12X55	2
7	MG12-0200A	M124100002	VIBRATION DAMPER	4
8	62203-2RSR	180503	BEARING	1
9	MG12-0103	M128100004-1	SHAFT ASSY.	1
11	5202-2RS	3056202	BEARING	1
13	MG12-0104	M128100005-1	FLANGE CONNECTOR	1
14	GB70-M6X25	T70-1985-M6X25	HEXAGONAL BOLT M6X25	4
15	GB5782-M8X25	T5782-2000-M8X25	BOLT M8X25	4
16	GB97.1-8	97.1-M8	WASHER 8	4
17	MG12-0760	M124100008	HANDLE	1
18	MG12-0774	M128100006	RUBBER PAD	1
19	MG12-0410	M124100003	RUBBER CONNECTION	1
20	GB97.1-8	97.1-M8	WASHER 8	4
21	GB889-M8	T41-1986-M8	SCREW M8	4
22	GB894-12	T894.1-1986-12	RETAINING RING 12	1
23	6201-DDU	80101	BEARING	2
24	MG12-0402	M128100007	DRIVE SHAFT	1
25	MG12-0771	M128100008-1	STAND RUBBER	1
27	MG12-0772	M128100010	STAND	1
28	GB889-M8	T41-1986-M8	SCREW M8	1
29	GB5782-M8X25	T5782-2000-M8X20	BOLT M8X20	1
30	MG12-0740	M128100011-1	CLIP FOR HANDLES	4
32	MG12-0401	M128100012	HOUSING SHAFT	1
33	GB276-6201-2ZCM	80201	BEARING	1
34	MG12-0420	M124100004	CLUTCH ASSY.	1
37	MG12-0732	M124100006	HANDLE GRIP SECTION	2
38	MG12-0731	M128100014	GRIP FOR HANDLE	2
39	080350	M124100007-1	HONDA ENGINE	1
	154462	M124100007-2	CHINESE PETROL ENGINE	1
	050350	M124100007-3	ROBIN ENGINE	1
40	GB818-M4X12	T818-1985-M4X10	BOLT M4X10	2
41	MTSP-E002	M124100010	ON OFF SWITCH	1
42	GB6170-M4	T41-1986-M4	SCREW M4	2
44	GB97.1-4	97.1-M4	WASHER 4	2
45	MTSP-E001	M124100011	WIRE	1
46	MG12-0750	M128100015	HANDLE	1
47	MG12-0500	M124100012	THROTTLE WIRE FOR HONDA ENGINE	1
	MG12-0500B		THROTTLE WIRE FOR ROBIN & CHINESE ENGINE	1
48	MG12-0720	M124100013	THROTTLE LEVER	1
49	MG12-0710	M128100016	HANDLE	1
50	GB93-6	97.1-M6	SPRING WASHER 6	4
51	GB5782-M6X35	T5782-2000-M6X35	BOLT M6X35	4
52	GB97.1-6	97.1-6	SPRING WASHER 6	4
53	GB9871.1-FB15X30X7MQ	M128100017	OIL SEAL 15X30X7	1
54	MG12-0013	M128100018	COLLAR	2
55	MG12-0105	M128100019	GASKET	1
56	MG12-0773	97.1-M8	WASHER 8	2
57	GB93-6		SPRING WASHER 6	1
58	6201-2ZCM		BEARING	1



Distributed By



MASALTA ENGINEERING CO., LTD

Add: Weisi Road, Baohe Industrial Estate, Hefei, China
Tel: 86-551-4846600, 4846601 Fax: 86-551-4846616
E-mail: sales@masalta.com.cn, masalta@mail.hf.ah.cn,
[Http://www.masalta.com.cn](http://www.masalta.com.cn)